

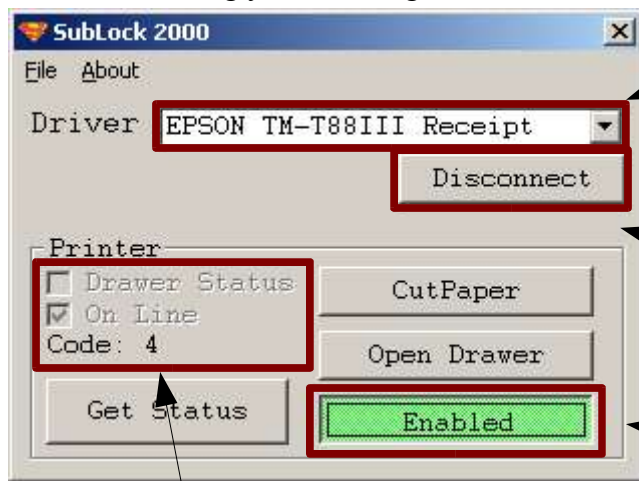
Running SubLock 2000

When SubLock is started for the first time, you may get an error saying the printer driver is not installed. This simply means you do not have the required Epson Drivers. For instructions on installing these drivers, please see the "Installation" section of this document.

If the required drivers are installed and the printer is plugged in and turned on, nothing will happen. Don't panic. SubLock is running in the background, waiting for the drawer to open.

To access SubLock's managerial interface, press Ctrl + Shift + F10. This will bring up a password prompt.

When you successfully enter your password, you will be presented with an interface allowing you to manage SubLock.



This is the name of the printer SubLock is currently using

This button allows you to disconnect from one printer and re-connect to another

This button indicates the status of SubLock
When the button is pressed, SubLock will lock the screen when the cash drawer is open.

This area indicates the printer and drawer status



This will change the manager password



You can also hide or quit the program

You will be prompted for your password here

When the cash drawer opens, the screen locks. The activity on the screen before the cash drawer opened is still visible, but non-interactive. When the cash drawer is closed again, this screen will disappear. To un-lock the screen, but keep the cash drawer open, the 'q' key may be pressed. This will prompt for the manager password. After it is successfully entered (hitting enter at the end), the screen will un-lock.

At times, there may be situations where the screen should not be locked when the cash drawer is open, such as when a new day is starting up, a cash drop is being performed or a cash-in is taking place. SubLock looks for these events and will not lock the screen if they are taking place.

